

Cheney Park Precinct

Investigate and resolve the high salinity presence across the sports playing surface.
Upgrade and expand the floodlighting - see legend.

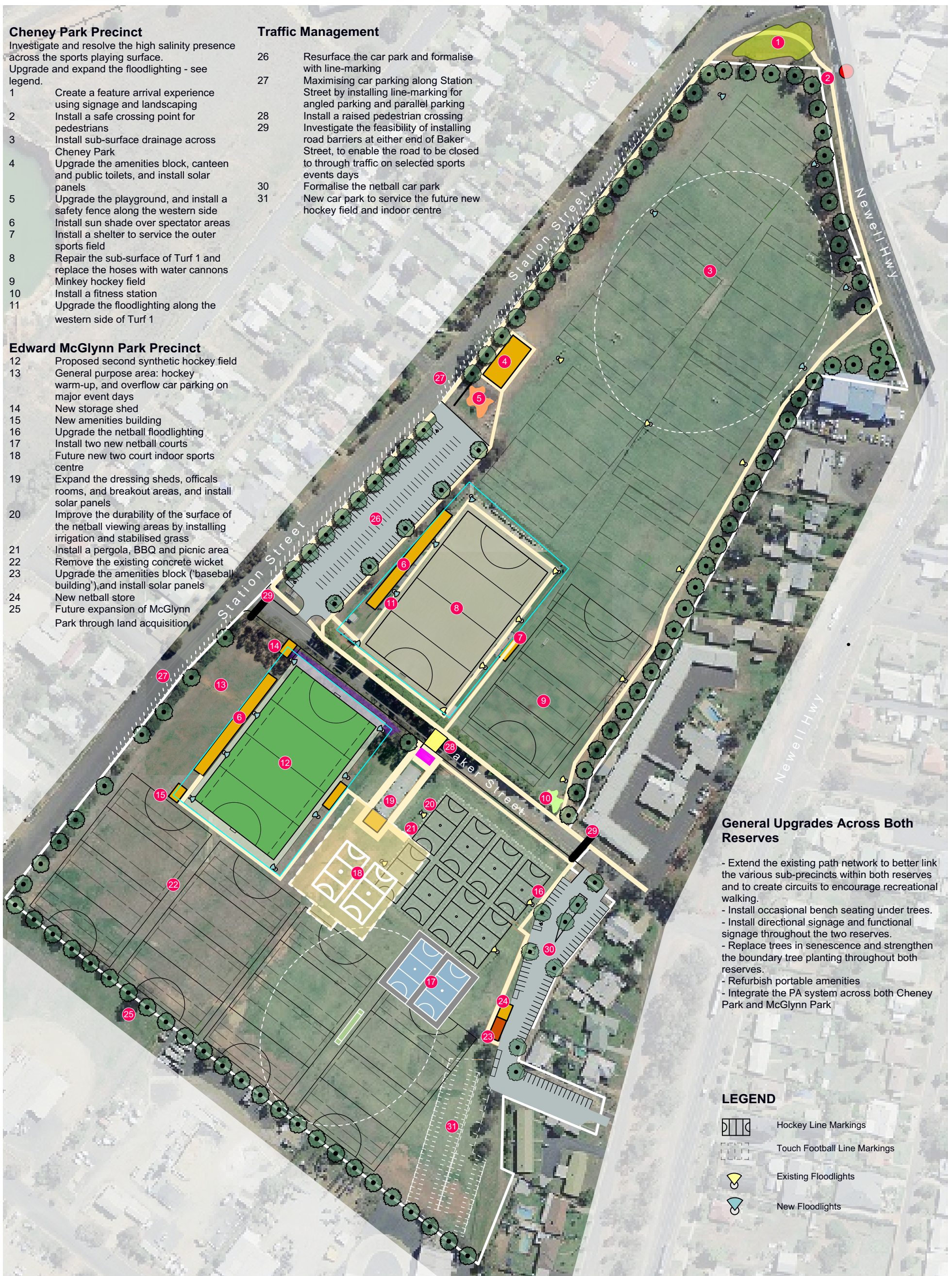
- 1 Create a feature arrival experience using signage and landscaping
- 2 Install a safe crossing point for pedestrians
- 3 Install sub-surface drainage across Cheney Park
- 4 Upgrade the amenities block, canteen and public toilets, and install solar panels
- 5 Upgrade the playground, and install a safety fence along the western side
- 6 Install sun shade over spectator areas
- 7 Install a shelter to service the outer sports field
- 8 Repair the sub-surface of Turf 1 and replace the hoses with water cannons
- 9 Minkey hockey field
- 10 Install a fitness station
- 11 Upgrade the floodlighting along the western side of Turf 1

Traffic Management

- 26 Resurface the car park and formalise with line-marking
- 27 Maximising car parking along Station Street by installing line-marking for angled parking and parallel parking
- 28 Install a raised pedestrian crossing
- 29 Investigate the feasibility of installing road barriers at either end of Baker Street, to enable the road to be closed to through traffic on selected sports events days
- 30 Formalise the netball car park
- 31 New car park to service the future new hockey field and indoor centre

Edward McGlynn Park Precinct

- 12 Proposed second synthetic hockey field
- 13 General purpose area: hockey warm-up, and overflow car parking on major event days
- 14 New storage shed
- 15 New amenities building
- 16 Upgrade the netball floodlighting
- 17 Install two new netball courts
- 18 Future new two court indoor sports centre
- 19 Expand the dressing sheds, officials rooms, and breakout areas, and install solar panels
- 20 Improve the durability of the surface of the netball viewing areas by installing irrigation and stabilised grass
- 21 Install a pergola, BBQ and picnic area
- 22 Remove the existing concrete wicket
- 23 Upgrade the amenities block ('baseball building'), and install solar panels
- 24 New netball store
- 25 Future expansion of McGlynn Park through land acquisition

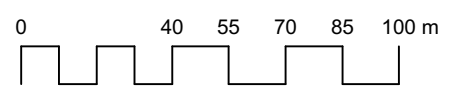
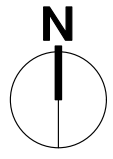


General Upgrades Across Both Reserves

- Extend the existing path network to better link the various sub-precincts within both reserves and to create circuits to encourage recreational walking.
- Install occasional bench seating under trees.
- Install directional signage and functional signage throughout the two reserves.
- Replace trees in senescence and strengthen the boundary tree planting throughout both reserves.
- Refurbish portable amenities
- Integrate the PA system across both Cheney Park and McGlynn Park

LEGEND

- Hockey Line Markings
- Touch Football Line Markings
- Existing Floodlights
- New Floodlights



Cheney Park - McGlynn Park Master Plan

Revised August 2018